



HOMEGUIDE

Lesson 11.1

Name _____

Date _____

**RIDDLE
RANGERS**
MYSTERY ISLAND



DRAW IT!

Draw a picture of your favorite way to stay connected to Jesus. Some ways might include praying, singing songs, going to church, or reading the Bible.

JOURNAL IT!

The fruits of the Spirit are love, joy, peace, patience, kindness, goodness, faithfulness, gentleness and self-control. Write about which of these "fruits" you need to grow in the most. Ask God to help you.

THIS WEEK WE LEARNED

JESUS IS THE TRUE VINE

BIG IDEA: Jesus is the vine, so we can grow by staying connected to Him.

BIBLE BASIS: John 15:1-17

KEY VERSE: "I am the vine. You are the branches. If you remain joined to me, and I to you, you will bear a lot of fruit." John 15:5 (NirV)





READ IT!

John 15:1-8. Draw a picture of the story or write to God what your favorite part of that story was. Tell Him why you liked it.

PRAY IT!

One way we can stay connected to Jesus is through prayer. Write a prayer telling Jesus why you love Him so much.

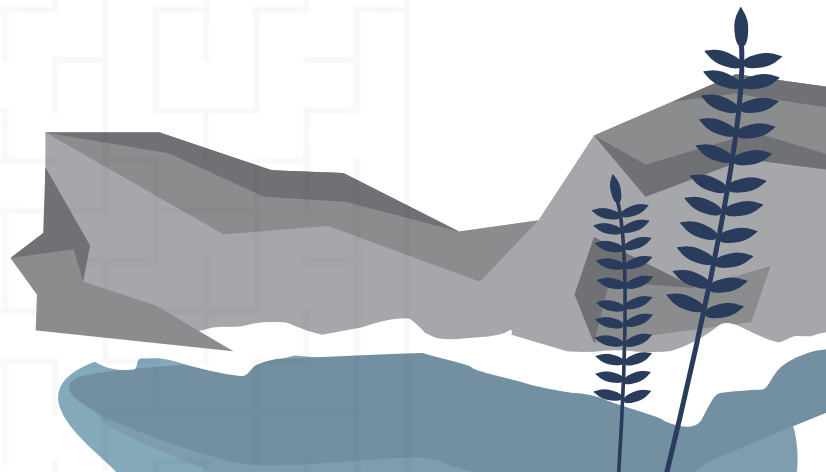
NEXT WEEK'S LESSON

JESUS IS THE GOOD SHEPHERD

BIG IDEA: Jesus is the good shepherd, so we should listen to His voice and follow Him.

BIBLE BASIS: John 10:1-18

KEY VERSE: "I am the good shepherd. I know my sheep, and my sheep know me." John 10:14 (NirV)



LESSON 11.1:
Jesus Is the True Vine



Bible Basis:

John 15:1–17



Big Idea:

Jesus is the vine, so we can grow by staying connected to Him.



Memory Verse:

“I am the vine. You are the branches.”

John 15:5a (NirV)

It's time for...

TABLE TALK

How to use this card:

Fold along the dotted lines to create three equal panels. Then, tape the two ends together to form a triangle. Stand this card on your table and use it during mealtimes or bedtime to spark meaningful conversations as a family.

DAY 1

Question:

Retell what Jesus said about the vine and branches in your own words. What part did you like best?

DAY 2

Question:

Why do branches need to stay connected to the vine to grow?

DAY 3

Question:

What are some ways we can stay connected to Jesus every day?

DAY 4

Question:

What happens when we forget to spend time with Jesus?

DAY 5

Question:

How can staying connected to Jesus help us grow kinder, braver, or more loving?

BONUS QUESTION

If Jesus' vine grew silly fruit, what would it grow — giggle grapes, joy apples, or kindness kiwis?



HOMEGUIDE

Lesson 11.2

Name _____

Date _____

**RIDDLE
RANGERS**
MYSTERY ISLAND



DRAW IT!

Draw a picture of the Good Shepherd with His sheep.

JOURNAL IT!

How does it make you feel to know that Jesus is your Good Shepherd? Write Him a letter and tell Him about it.

THIS WEEK WE LEARNED

JESUS IS THE GOOD SHEPHERD

BIG IDEA: Jesus is the good shepherd, so we should listen to His voice and follow Him.

BIBLE BASIS: John 10:1-18

KEY VERSE: "I am the good shepherd. I know my sheep, and my sheep know me."

John 10:14 (NirV)





READ IT! John 10:11-18. Draw a picture of the story or write to God your favorite part of the story. Tell Him why you liked it.

PRAY IT!

Jesus is the Good Shepherd. Write a prayer asking Jesus to help you know His voice and follow Him.

NEXT WEEK'S LESSON

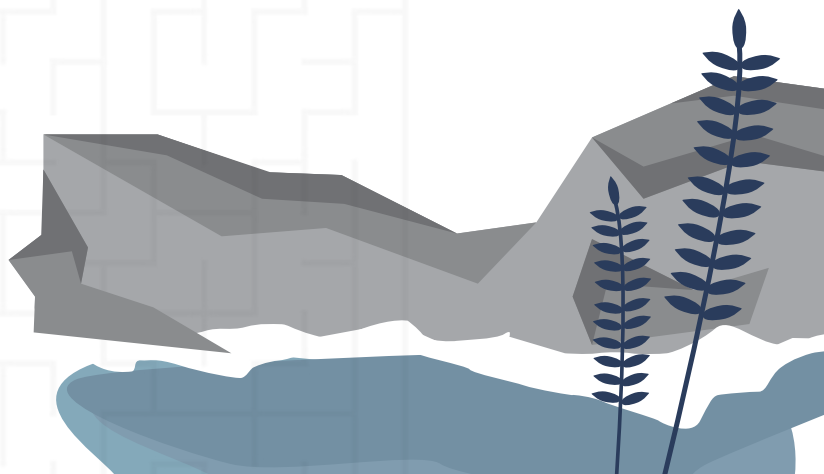
JESUS IS THE LIGHT OF THE WORLD

BIG IDEA: Jesus is the light that leads us out of darkness.

BIBLE BASIS: John 8:12-20

KEY VERSE: "I am the light of the world. Anyone who follows me will never walk in the darkness. They will have that light. They will have life."

John 8:12 (NirV)



LESSON 11.2:

Jesus Is the Good Shepherd



Bible Basis:

John 10:1–18



Big Idea:

Jesus is the good shepherd, so we should listen to His voice and follow Him.



Memory Verse:

“My sheep listen to my voice. I know them, and they follow me.”

John 10:27 (NirV)

It's time for...

TABLE TALK

How to use this card:

Fold along the dotted lines to create three equal panels. Then, tape the two ends together to form a triangle. Stand this card on your table and use it during mealtimes or bedtime to spark meaningful conversations as a family.

DAY 1

Question:

Retell the story Jesus told about the shepherd. What stood out to you?

DAY 2

Question:

What does a good shepherd do for his sheep?

DAY 3

Question:

How can we listen for Jesus' voice in our lives today?

DAY 4

Question:

Why is it important to follow Jesus instead of other voices?

DAY 5

Question:

How can we trust Jesus when we feel scared or unsure?

BONUS QUESTION

If Jesus gave everyone a sheep nickname, what do you think yours would be?



HOMEGUIDE

Lesson 11.3

Name _____

Date _____

**RIDDLE
RANGERS**
MYSTERY ISLAND



DRAW IT!

Draw a picture of Jesus glowing bright with light.

JOURNAL IT!

What kind of sins do you "run into" sometimes?

Tell Jesus about it in a letter.

THIS WEEK WE LEARNED

JESUS IS THE LIGHT OF THE WORLD

BIG IDEA: Jesus is the light that leads us out of darkness.

BIBLE BASIS: John 8:12-20

KEY VERSE: "I am the light of the world. Anyone who follows me will never walk in the darkness. They will have that light. They will have life." John 8:12 (NirV)





READ IT!

John 8:12. Draw a picture of the verse or write to God what you like best about that verse.

PRAY IT!

Jesus is the light of the world. Write a prayer asking Him to help you avoid sin.

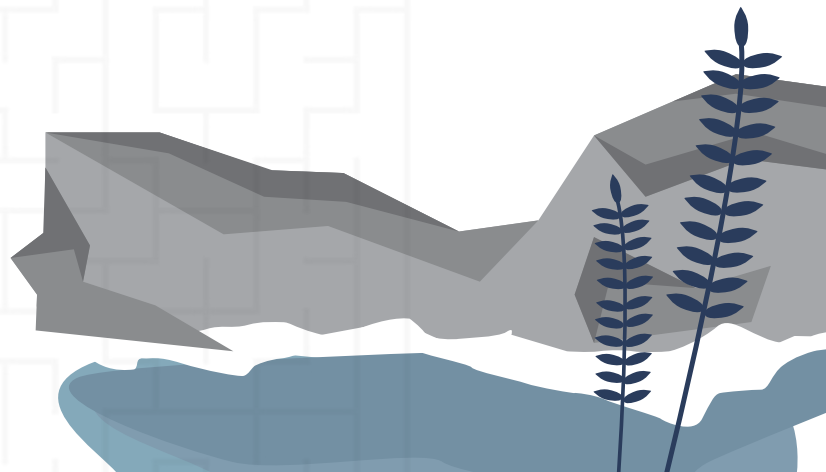
NEXT WEEK'S LESSON

JESUS IS THE WAY, TRUTH, AND LIFE

BIG IDEA: Jesus is the one true God and following Him is the only way to eternal life.

BIBLE BASIS: John 14:5-14

KEY VERSE: "I am the way and the truth and the life. No one comes to the Father except through me." John 14:6 (NirV)



LESSON 11.3:

Jesus Is the Light of the World



Bible Basis:

John 8:12–20



Big Idea:

Jesus is the light that leads us out of darkness.



Memory Verse:

“Jesus said, ‘I am the light of the world.’”

John 8:12a (NIV)

It's time for...

TABLE TALK

How to use this card:

Fold along the dotted lines to create three equal panels. Then, tape the two ends together to form a triangle. Stand this card on your table and use it during mealtimes or bedtime to spark meaningful conversations as a family.

DAY 1

Question:

Retell what Jesus said about being the light. What do you think He meant?

DAY 2

Question:

How does light help us when things are dark?

DAY 3

Question:

What kinds of darkness do kids sometimes face today?

DAY 4

Question:

How can Jesus help us make good choices when things feel confusing?

DAY 5

Question:

How can we reflect Jesus' light to others at school or at home?

BONUS QUESTION

If you carried a flashlight that showed kindness instead of light, where would you point it today?



HOMEGUIDE

Lesson 11.4

Name _____

Date _____

**RIDDLE
RANGERS**
MYSTERY ISLAND



DRAW IT!

Draw the letters ABC in a super fun and artistic way.
Tell your parents what each letter stands for.

JOURNAL IT!

Imagine you get to visit Heaven for a day. What do you think it would be like? Write about your day.

THIS WEEK WE LEARNED

JESUS IS THE WAY, TRUTH, AND LIFE

BIG IDEA: Jesus is the one true God and following Him is the only way to eternal life.

BIBLE BASIS: John 14:5-14

KEY VERSE: "I am the way and the truth and the life. No one comes to the Father except through me." John 14:6 (NirV)





READ IT! John 14:1-7. Draw a picture of the story or write to God your favorite part of the story. Tell Him why you liked it.

PRAY IT!

Write a prayer thanking Jesus for dying for your sins.

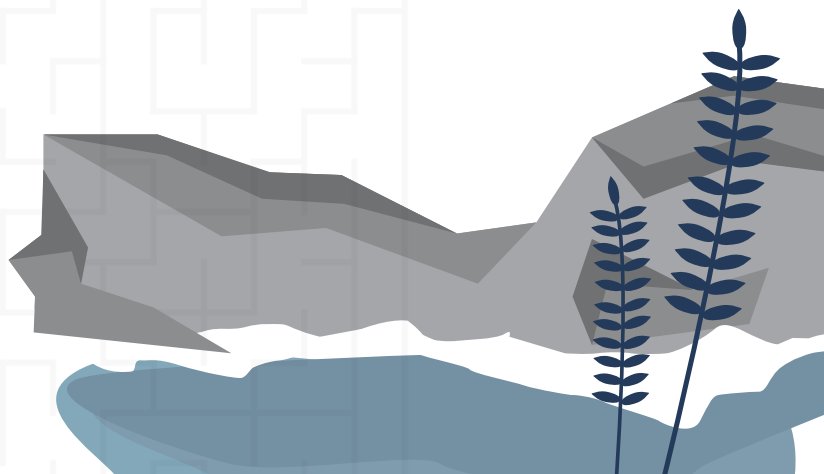
NEXT WEEK'S LESSON

THE BOOK OF JAMES: WISDOM IN TIMES OF TROUBLE

BIG IDEA: God calls us to seek Him for wisdom in times of trouble.

BIBLE BASIS: James 1:2-5; 2 Chronicles 20:1-30

KEY VERSE: "If any of you needs wisdom, you should ask God for it. He will give it to you." James 1:5 (NirV)



LESSON 11.4:

Jesus Is the Way, the Truth, and the Life



Bible Basis:

John 14:5–14



Big Idea:

Jesus is the one true God, and following Him is the only way to eternal life.



Memory Verse:

“Jesus answered, ‘I am the way and the truth and the life.’”

John 14:6a (NirV)

It's time for...

TABLE TALK

How to use this card:

Fold along the dotted lines to create three equal panels. Then, tape the two ends together to form a triangle. Stand this card on your table and use it during mealtimes or bedtime to spark meaningful conversations as a family.

DAY 1

Question:

Retell what Jesus said to His disciples. What part was most important to you?

DAY 2

Question:

What does it mean that Jesus is the way?

DAY 3

Question:

Why can we trust Jesus to always tell the truth?

DAY 4

Question:

How does following Jesus help us know God better?

DAY 5

Question:

What are some ways kids can follow Jesus every day?

BONUS QUESTION

If following Jesus were like following a trail, what clues would help you know you're on the right path?